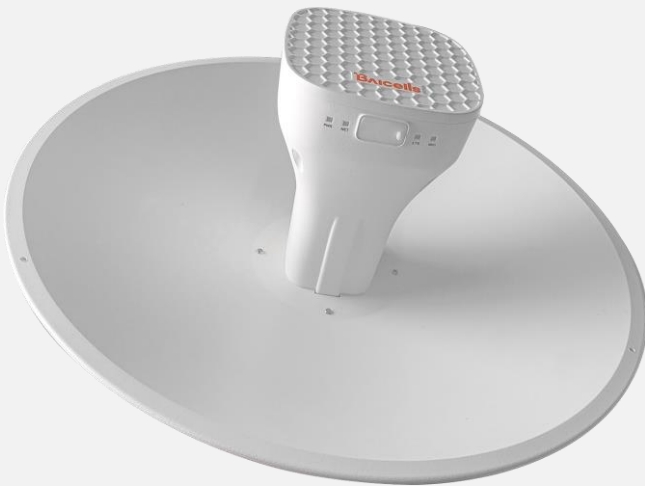


EG8055P

Outdoor WiFi Customer Premise Equipment Datasheet



INTRODUCTION

The Product is a high performance LTE CAT12 CPE that provides a capabilities to an user accessing the Internet through Baicells Simple Network Access Point (SNAP) Power over Ethernet (PoE) router.

By easy-steps operation, the CPE can connect to BaiOMC system for centralized control and monitor.

The product comes with a standard one-year warranty; an extended warranty is available.

HIGHLIGHTS

NOTE: Features can vary based on model or region.

- support LTE Band
1/3/5/7/8/20/28/32/38/40/41/42/43
- Complies with 3GPP Release 11 CAT12 standards
- 1000 Mbps Ethernet interface
- Peak data rate of up to 600Mbps
- GUI-based local and remote Web management
- Supports TR069 network management protocol
- User-friendly LED status indicators
- Power supply with PoE
- Pole or wall mounted
- Transparent bridge mode

TECHNOLOGY

LTE Standard	3GPP Release11, CAT12
LTE Mode	TDD
Channel Bandwidth	SC: 5/10/15/20 MHz CA: 60 MHz as maximum aggregated bandwidth
Frequency Bands	LTE-FDD: B1/3/5/7/8/20/28/32 LTE-TDD:B38/40/41/42/43
Multiplexing	DL2x2 MIMO
Security	Firewall: IP/MAC/URL filter; ACL rule

INTERFACE

Ethernet Interfaced	1 RJ-45 port 10/100/1000 auto-sensing, auto-MDX, PoE
Protocols Used	IPv4/IPV6, UDP, TCP, IP, ICMP, SNMPv2c, SNMPv3c, HTTPS, SSH, TELNET, TR069, TR104
Network Management	Web GUI, ACS, OMC, SNMP
VLAN	802.IQ/VxLAN/NGMWAN

PERFORMANCE

Peak Rate	FDD: DL 600Mbps @ 3CC CA, UL 150Mbps @ 2CC CA TDD: DL 410Mbps @ 3CC CA, UL 28Mbps (2:7) @ 2CC CA
Modulation	DL: QPSK, 16QAM, 64QAM, 256QAM UL: QPSK, 16QAM, 64QAM
Tx Power	23±2dBm
Receive Sensitivity	<-94 dBm @ QPSK, 20 MHz, 25°C

LINK BUDGET

Antenna Type	Dish
Antenna Gain	B38/40/41 : 17 ~ 20dBi Others Band: 1~3dBi
Max Transmit Power	23dBm

Maximum EIRP	B38/40/41: 40 ~ 43dBm Others Band: 24 ~ 26dBm
--------------	--

FEATURES

Network Mode	NAT or Bridge
VPN	L2TP L2/L3, GRE L2/L3, NGMWAN
NAT	Port forwarding, port trigger, DMZ, ALG
Diagnostics	TCP dump, ping, traceroute
Statistics	LTE status; connection/system up time; device status; DHCP client list; Wi-Fi station list; firewall status
Maintenance	Date and time setting; reboot; restore factory settings; restore or back up configuration file; firmware upgrade locally or OTA

PHYSICAL

IP Protection Rating	IP65
LED Indicators	4 LED Indicators
Restore Button	Press for 10 seconds to restore the CPE to its factory settings
Temperature	<ul style="list-style-type: none"> Operating Temperature: -40°F to 131°F / -40°C to 55°C Storage Temperature: -40°F to 158°F / -40°C to 70°C
Humidity	5%~95%
Power Consumption	<18 W
Power Supply	With PoE Adaptor: <ul style="list-style-type: none"> INPUT 100-240VAC OUTPUT 24VDC 1A

MODEL NUMBERS

EG8055P-M26	Atom Outdoor CAT12 CPE, 2T2R, 1 ~ 20dBi , directional antenna, 1 GE , POE 24V 1A LTE : 1/3/5/7/8/20/28/32/38/40/41/42/43 FCC certification: TBD IC certification: TBD
-------------	---